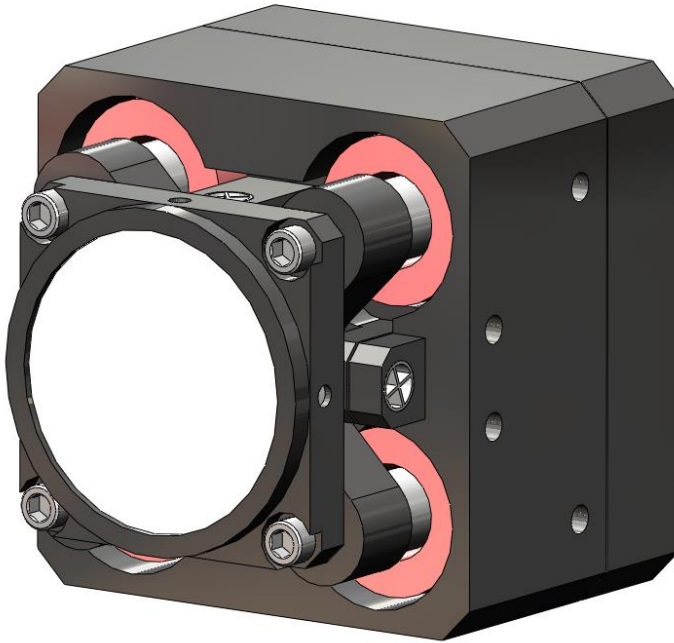


FEATURES:



- Flexure suspension allows stiction free motion of the mirror with an infinite fatigue lifetime
- Built in optical sensor allows the user to monitor both axes of mirror motion
- Moving magnet design allows coils to be heat sunk to the mirror base structure
- Uses industry standard 1" x 0.25" (or 1" x 6mm) glass mirrors
- Mirror coating to customer requirements
- Mirror mounted into sub-mount using low out-gassing RTV
- Additional sub-mount available for user installation of mirror
- Wave-front quality 1/10th wave p-v (depends on mirror substrate)
- Useable aperture 0.94"
- Angular range of +/-1.5 to +/-3.0 degrees mechanical

Model OIM5001 features a removable submount which holds an industry standard 1" x 0.25" or 6mm glass mirror substrate with a customer specified reflective coating.

A built in high precision optical sensor monitors mirror angle. The compact optical head is attached to a servo controller using a supplied 6 foot cable. The user inputs analog mirror command to the controller to steer the mirror.



Mirror Specifications

Specification	Typical	Units
Dynamic Performance		
Mirror Angular Range (mechanical)	+/- 1.5 to +/-3.0	degrees
Angular resolution	<0.6 to <1.2	urads rms
3dB Bandwidth (user adjustable, factory set for 550Hz)	> 850	Hz
Linearity	1 to 2	% Full Scale
Step Response (1 mrad step)	<5	ms
Mirror Substrate		
Material	Fused Silica	
Mirror substrate size	1" x .25" or 25.4mm x 6 mm	
Coating	Protected Aluminum	
Reflectivity	>85% from 400 – 700nm	
Wavefront quality	$\lambda/10$ @ 633nm	waves
Clear Aperture	0.94	inches
Electrical		
Peak power	30	Watts
Mechanical		
Mirror head size	1.6 X 1.6 X 1.63	inches
Weight, no foot	2.9	oz
Controller size	2.0 X 4.0 X 6.1	inches
Weight	21	oz
Head to Controller Cable Weight	8.0	oz
Thermal		
Operational Temperature Range	-10 to +60	Deg C
Storage Temperature Range	-20 to +80	Deg C

Complete mirror system
(mirror head, controller, cables, and power supply)

Includes:

Fast Steering Mirror Head

Protected aluminum or gold mirror substrate*

Analog Servo Controller

6 foot cable FSM to Controller

Table top power supply

* Contact Optics In Motion to obtain a price for other mirror coatings (protected silver, multilayer ...).

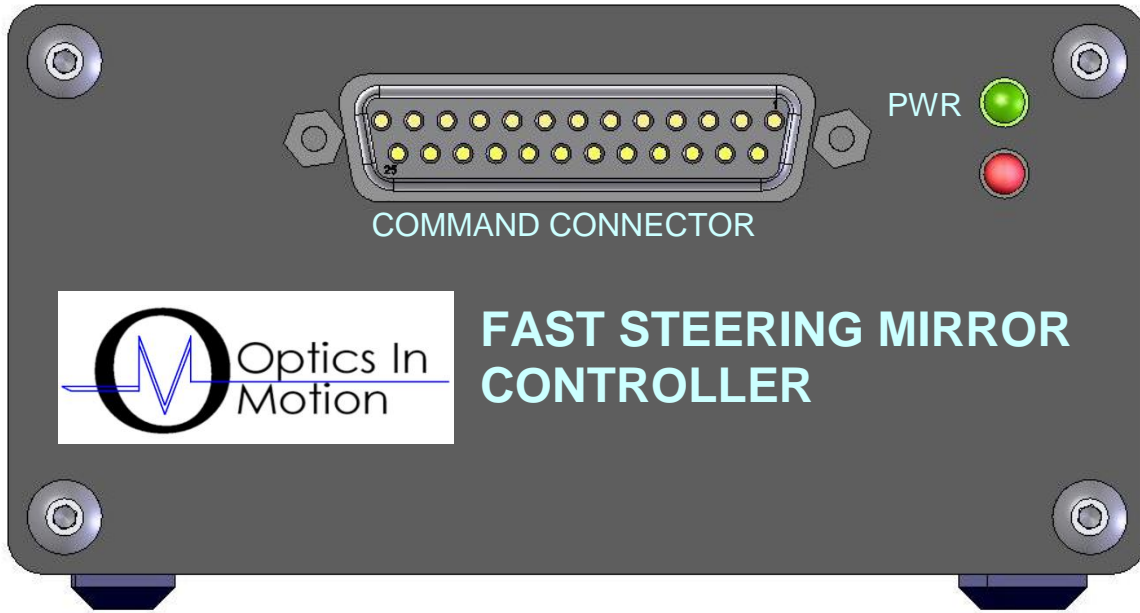


Figure 1: Controller Front View

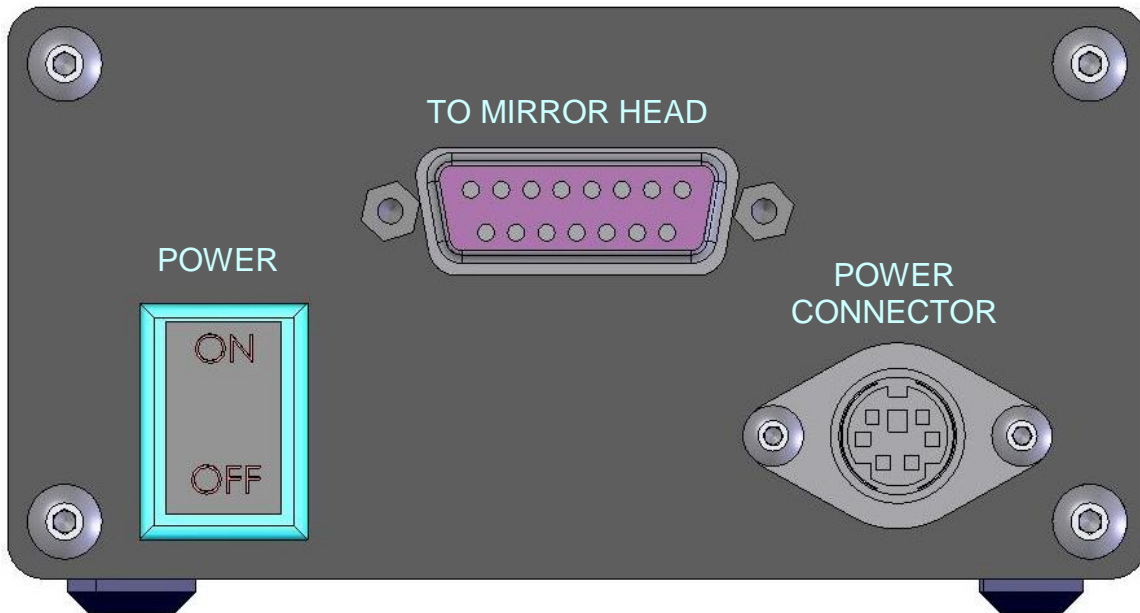
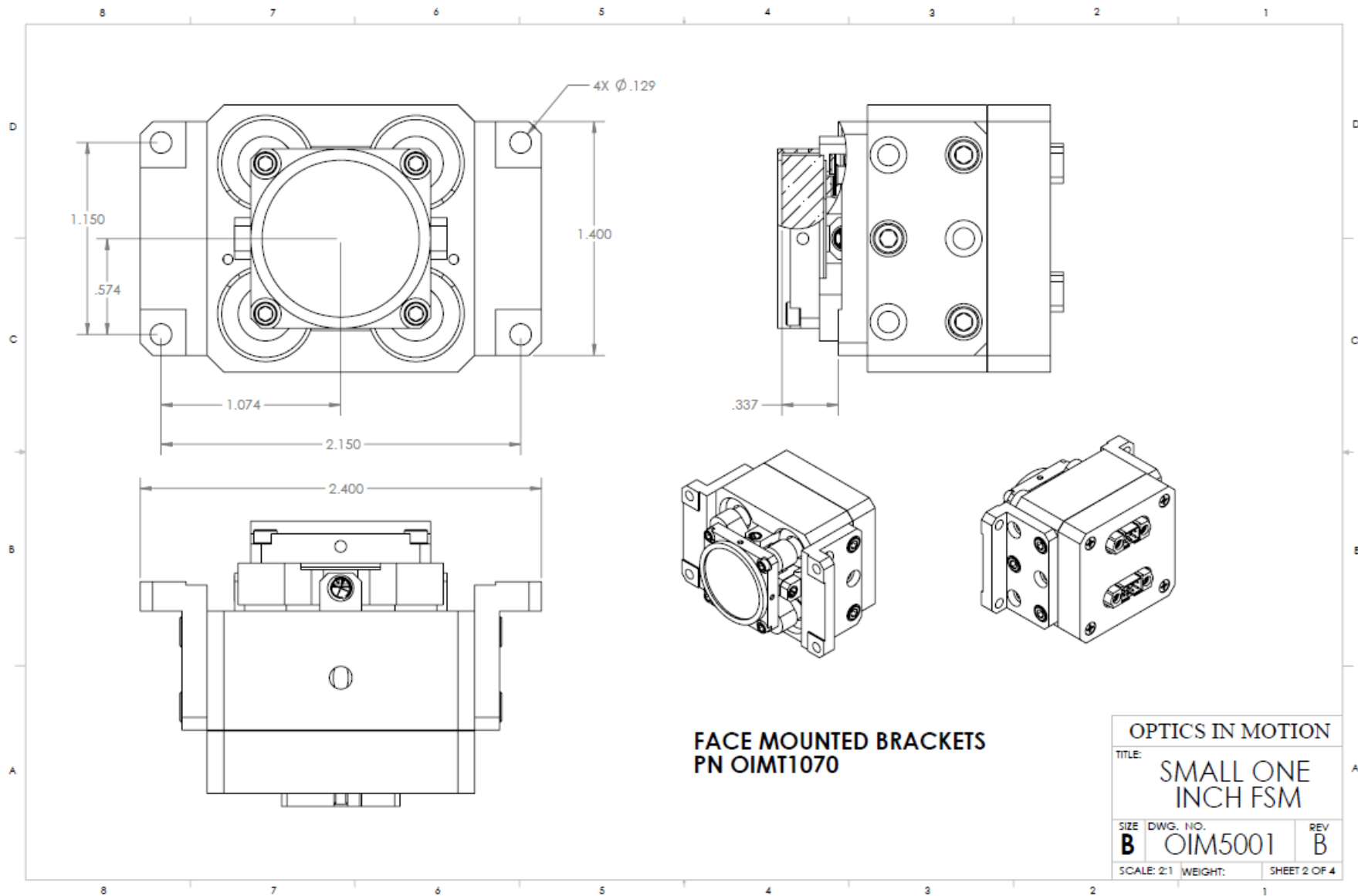
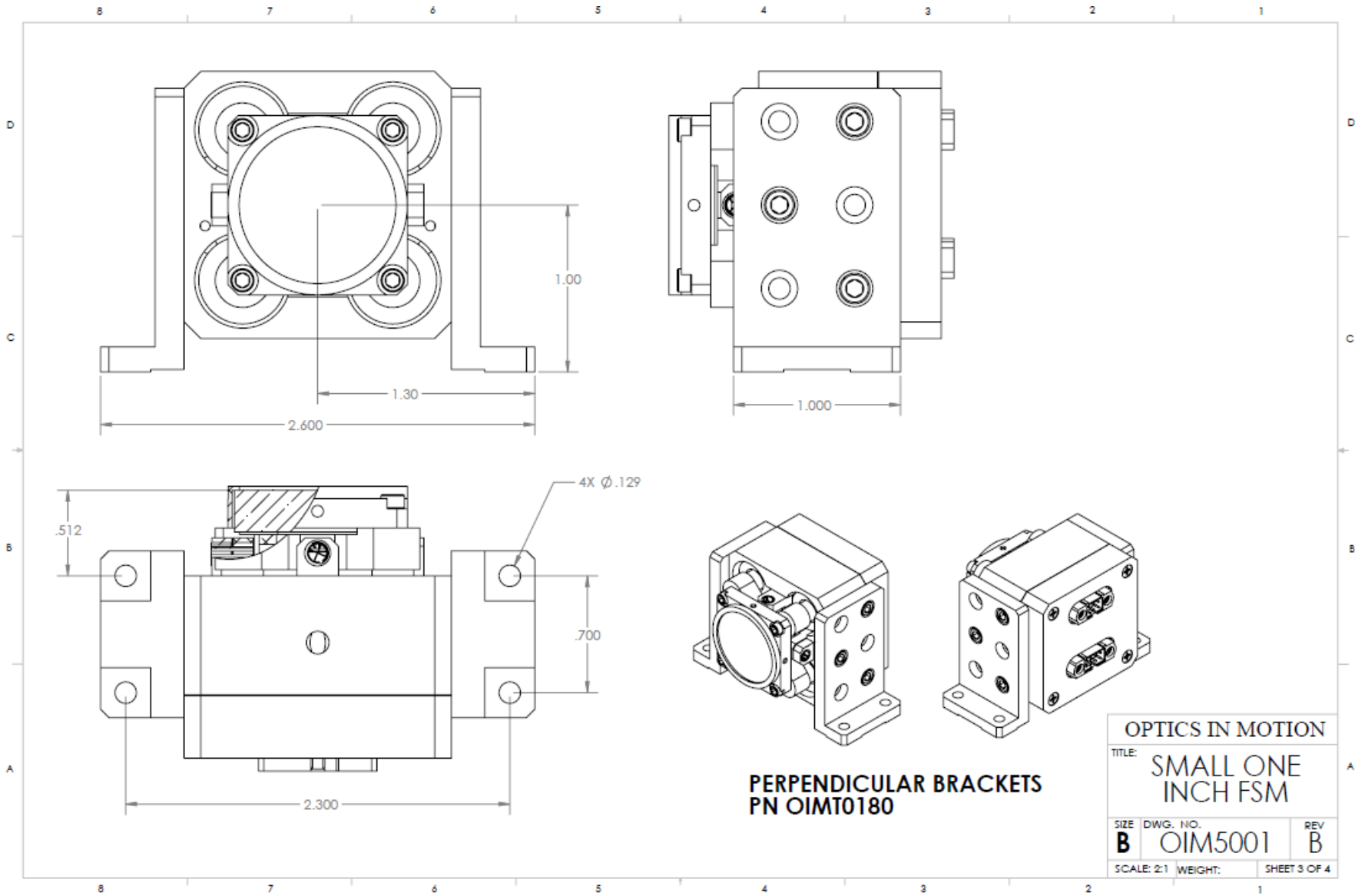


Figure 2: Controller Rear View

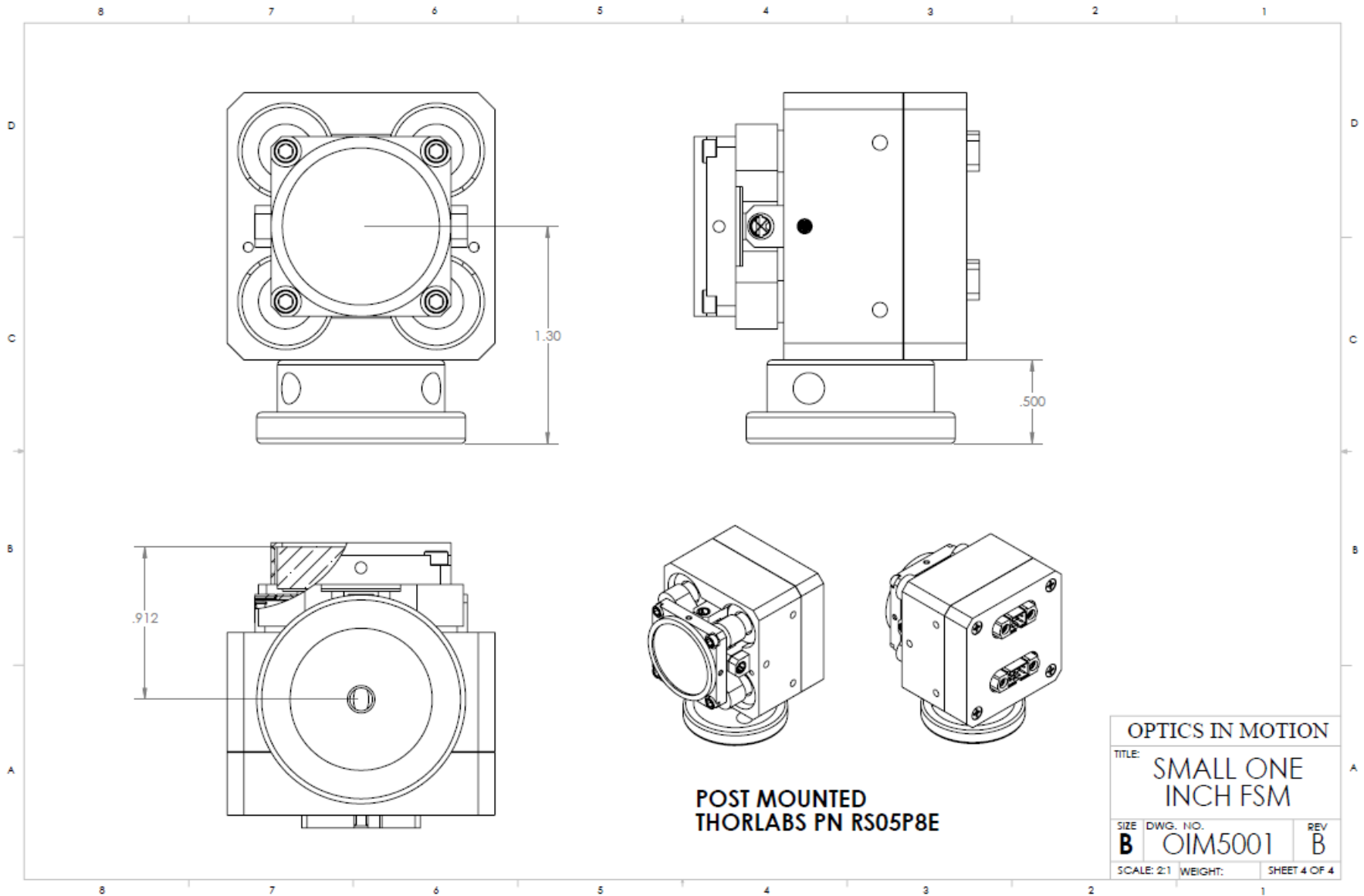


Optics In Motion LLC, 4223 Rutgers Ave, Long Beach, CA 90808
(562) 481-7103, E-Mail: sales@opticsinmotion.net



**PERPENDICULAR BRACKETS
PN OIMT0180**

OPTICS IN MOTION		
TITLE: SMALL ONE INCH FSM		
SIZE B	DWG. NO. OIM5001	REV B
SCALE: 2:1	WEIGHT:	SHEET 3 OF 4



Optics In Motion LLC, 4223 Rutgers Ave, Long Beach, CA 90808
 (562) 481-7103, E-Mail: sales@opticsinmotion.net

Command Connector Wiring Table

25-Socket Sub-miniature D Connector

Pin Number	Signal Name	I/O Type	Description
1	X ERROR	Output	X summing junction error voltage output, difference between commanded and actual position. (referenced to ground)
2	INT/EXT SWITCH	Input	Normally low TTL input. High level switches the position feedback input from local to external. (used with input pins 10,11 and 17, 5)
3	X- COMMAND	Input	X mirror position command. Low side of differential command input. Range +/-10 Volts.
4	X+ COMMAND	Input	X mirror position command. High side of differential command input. Range +/-10 Volts.
5	X- EXTERNAL	Input	X external mirror position. Low side of differential position input (from external quad or similar position sensor)
6	GND	Output	Ground Reference
7	-15 VOLTS	Output	-15 VDC for external loads of less than 100ma.
8	RESERVED		
9	N/C		
10	Y+ EXTERNAL	Input	Y external mirror position. High side of differential position input (from external quad or similar position sensor)
11	Y- EXTERNAL	Input	Y external mirror position. Low side of differential position input (from external quad or similar position sensor)
12	Y- COMMAND	Input	Y mirror position command. Low side of differential command input. Range +/-10 Volts.
13	Y+ COMMAND	Input	Y mirror position command. High side of differential command input. Range +/-10 Volts.
14	X POSITION	Output	X mirror angular position readout from local position sensor. (referenced to ground)
15	+5 VOLTS	Output	5 VDC for external loads of less than 100ma.
16	GND	Output	Ground Reference
17	X+ EXTERNAL	Input	X external mirror position Low side of differential position input (from external quad or similar position sensor)
18	RESERVED		
19	+15 VOLTS	Output	+15 VDC for external loads of less than 100ma.
20	GND	Output	Ground Reference
21	RESERVED		
22	GND	Output	Ground Reference
23	Y POSITION	Output	Y mirror angular position readout from local position sensor. (referenced to ground)
24	Y ERROR	Output	Y summing junction error voltage output, difference between commanded and actual position. (referenced to ground)
25	RESERVED		